

CENTRE SPATIAL DE LIEGE

SPACE IS OUR INSPIRATION

Electronics



Flight Electronics and Software
Industrial R&D



Université
de Liège



ELECTRONICS LABORATORY

Space instruments hardware

- Design and prototyping of flight electronics : science payloads, launchers, defense, avionics.
- Radiation hardness, Stress analysis ,FMECA, Derating.
- Instruments for small satellites and Cubesats.
- Long experience with multi-institutes teams, ESA and EC projects.

Logic design, FPGA, Embedded Software

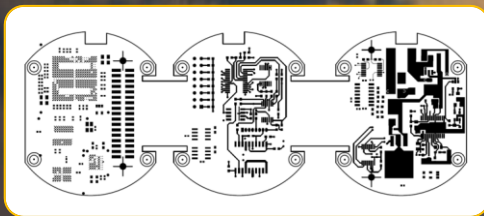
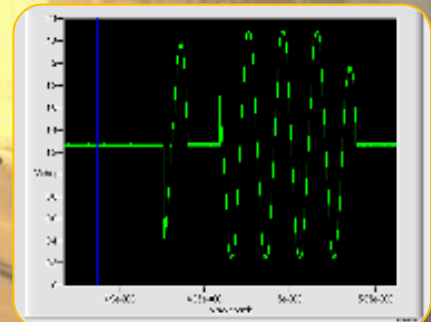
- Data acquisition and conversion
- Sensors interfacing
- Spacewire data links
- Image processing
- Motion & Temperature control
- HW / SW integration and validation

Sensors R&D for Industry

- Wireless accelerometer
- High resolution photometer
- Aircraft Health and Usage Monitoring
- Arc fault detection
- Wide temperature range / Cryogenics
- Harsh environments

Prototypes, Reverse Engineering, ITAR alternatives

- Guided rocket flight computer
- Power transmission line current monitor
- 1553 interface
- Magnetic battery charger
- X-ray fluorescence spectrometer
- PDU obsolescence management



Contact Person: N. Martin nmartin@ulg.ac.be +32(0)4/382.46.48
or JM. Gillis jmgillis@ulg.ac.be +32(0)4/382.46.33

Université
de Liège

